

Welcome

We welcome newcomers to the village; Vicky, Sophia and Phoebe Picken to Woodcock Cottage, Steven Davies to Meadow View, Glyn Jones to the Old Granary - all in Castle Pulverbatch and Carole Bragg to New House Farm. Also Sue Wakeley and her two daughters Freya and Georgia Kingsley and Kevin Coleman and his daughter Natasha to Wilderley Cottage.

Summer Fair, Sunday 21st June; 1pm-5pm

This major summer event for the village includes the following attractions: Piano smashing competition, Tug of War Competition, Childrens Fairground rides, Steam Engine, Dog Show, Assault Course for all ages, Birds of prey, Salopian Brass Band, Childrens Crafts, Prize Draw, BBQ, Shropshire Beagles, Refreshments, Penalty Shootout, Welly Wanging, Coconut Shy, Bar, Various stalls. An excellent day out for all the family

200 Club

The 2009 tickets for the village hall 200 club are now available. Members of the committee are doing the rounds with them now so make sure you have yours. This is a major source of income for the village hall and gives you the opportunity to win a prize each month.

Yoga

Join the all ability Yoga classes in the village hall very Tuesday evening at 6.45pm.

Hire the Village Hall

The Village Hall is available for hire from as little as £20. To arrange your next party or function there, please call Debbie on 718247 or email s-bruce@btconnect.com for full details and availability.

Photographs

www.pulverbatch.org.uk now carries six photo galleries (Flora and Fauna, Historical, Arty, Buildings, People and Views) to which everyone is encouraged to contribute. Please email any contribution to andrewgbwood@hotmail.com or deliver prints to Home Farm (with a note of your name and address to ensure their return) so they may be scanned.

Village Hall Committee

Both John Wilkinson and Tom Morris have retired from the committee after many years of service, for which we thank them both. Jane Gallagher has kindly agreed to join the committee but there are vacancies for anyone else who is interested in supporting our community facility. Contact any committee member for further information.

Village Hall Development

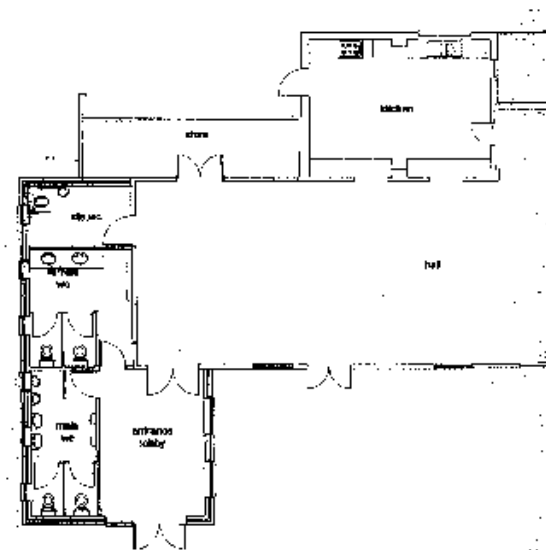
The Pulverbatch Village Hall committee have exciting plans for development of the Church Pulverbatch Village Hall.

The gents toilet facilities are at best rudimentary and have been a cause for concern for some time. Also, the hall has no disabled toilet facilities, which is a considerable drawback and is short of storage space.

Plans are being drawn up to build a new entrance foyer with space to hang coats and outer garments combined with a completely new toilet block incorporating new facilities for male, female and the disabled. Once this is in use, the old toilets will become storage rooms.

This is a major project and is likely to cost in the order of £50,000 – a great deal of money for a small village such as Pulverbatch. The committee is seeking grant funding for much of the work but the more we can raise ourselves the easier it is to obtain grant funding. Following on from the recent very successful ladies evening, there will be a series of fund raising events over the next 12 months and we are looking for as much local support as possible, both for these events and as donations. Please help us in any way you can. The next major event is the Summer Fair on 21st June.

We are off to a good start as a promise of £15,000 has been received from the last moments of Shrewsbury and Atcham Borough Council before it was replaced by the Unitary Council. However, we still have a long way to go.



Village Hall 200 Club – recent Prizewinners

November 2008

£40	167	Eric Wilkinson	Pulverbatch
£20	82	Barry Conde	Prestley
£10	158	Colin Bore	Frodesley
£10	6	Anne Cox	Pulverbatch

December 2008

£40	117	John Furney	Pulverbatch
£20	130	Rowena Wilkinson	Wrentnall
£10	111	Mr S Holmes	Pulverbatch
£10	197	Averil Taylor	Lyth Bank

January 2009

£40	28	Glenda Ellits	Longden Common
£20	53	Laura Taylor	Pulverbatch
£10	79	Val Murfin	Telford
£10	146	Colin Sankey	Pulverbatch

February 2009

£40	90	Linda Davies	The Lawns
£20	158	Colin Bore	Frodesley
£10	54	Alan Taylor	Pontesbury
£10	68	Mr & Mrs R Morris	Pulverbatch

March 2009

£40	51	Alan Taylor	Pontesbury
£20	139	John Wilkinson	Wrentnall
£10	56	Mr & Mrs S Ashley	Cothercott
£10	10	Mrs C Reynolds	Wrentnall

April 2009

£40	120	Sue Morris	Holly Grove
£20	122	Kieran & Gabby Morris	Cothercott
£10	157	Alan Taylor	Pontesbury
£10	180	Alison West	Churton

Pulverbatch Village Hall



Newsletter Spring 2009